

Why We're Here

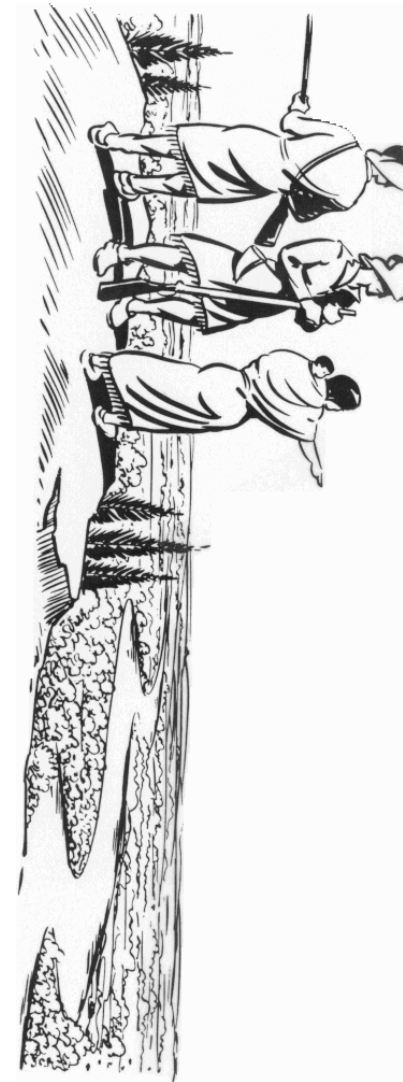
A Joint Effort to Reduce Pollution ~

South Dakota portion of the Lewis & Clark Watershed consists of 2 million acres. A two-year Watershed Assessment was completed in 2005 which documented conservation practices needed to reduce runoff water--water that travels through agricultural land, picking up chemicals, animal waste and eroded soil--eventually depositing the material in our rivers, lakes and streams. Completed assessments for Geddes Lake, Academy Lake, Platte Lake and Andes Lake watershed increased LCWIP by 465,000 acres.

Because the risk of damage from these pollutants can be dramatically reduced through the application of proper land management practices, Randall RC&D, NRCS, SDACD, SD-DENR, SCWDD, 11 Conservation Districts and others have joined hands in the creation of the Lewis & Clark Watershed Implementation Project.

Focus: Impaired Water Bodies

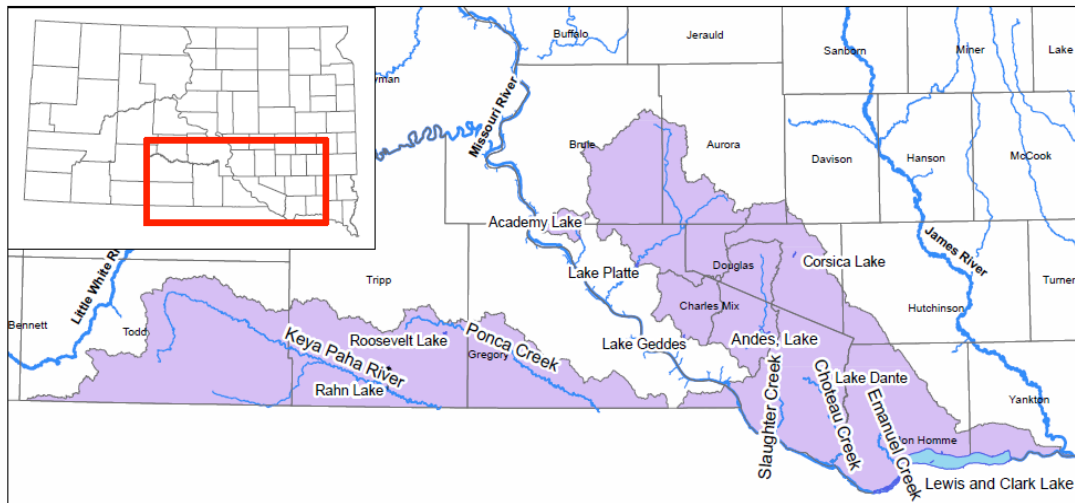
This watershed project is focused on reducing sediment and pollution of all lakes and streams in the watershed. This includes Lewis and Clark Lake at the culmination of the tributaries.




Lewis & Clark Watershed Implementation Project



Lewis and Clark Implementation Project Area



Legend

 Lewis And Clark Watershed area 2,500,000 Acres



In accordance with Federal law, this institution is prohibited from discriminating on the basis of race, color, national origin, sex, age, or disability. To file a complaint of discrimination, write Randall RC&D Council, P.O. Box 247, Lake Andes, SD 57356-0247.

Sponsored by the Following:

Randall Resource Conservation and Development (RC&D); Lower James RC&D and South Central RC&D; Conservation Districts: Gregory County, Hamill, Clearfield/Keyapaha, Todd County, Brule-Buffero, Aurora, Bon Homme County, Charles Mix, Davison, Douglas County, Hutchinson, and Yankton County Conservation Districts; South Central Water Development District (SCWDD); SD Association of Conservation Districts (SDACD); Natural Resources Conservation Service (NRCS); and SD Department of Environment and Natural Resources (DENR)

How It Works

Lewis and Clark Watershed Landowners should contact the one of the Conservation Districts for an initial visit by the project's Resource Management Specialists.

The specialists provide the owners with information about watershed impairment, how improved management practices can improve their operation, what assistance is available and the voluntary nature of the project.

Selected landowners are offered assistance in developing a plan employing land management practices that will benefit their operation while improving water quality and reducing sediment. The plan will concentrate on Best Management Practices, some or all of which may qualify the landowner for financial assistance to implement those practices.

Program Neutral Planning Techniques

The Resource Management Specialists will utilize program neutral planning techniques. Program neutral planning is the development of a plan without regard to funding sources. This means that no specific fund source will be initially targeted. The result is a plan that better fits the needs of the landowner and the natural resource by not limiting opportunities to a single funding source whose qualification requirements may frequently change.

The Process

Planning assistance offered by the project includes:

- Conducting survey of soil, water, plants, animals, air and cultural resources
- Determining the landowner's needs and preferences
- Identifying land management alternatives
- Preparing a map of existing and planned management practices
- Developing the landowner's preferred plan
- Selecting appropriate financial assistance sources
- Completing financial assistance application forms

In summary, the project's Resource Management Specialists offer a comprehensive service that includes developing a qualified land management plan as well as help in locating and applying for financial assistance.

Once the practices are funded, the funding agency and the landowner will be responsible for implementation of the practices.

Available Conservation Practices

Livestock Feeding Operations

Lewis & Clark Watershed Implementation Project has funding available to assist with engineering design for animal waste systems plus developing nutrient management systems on a cost-sharing basis.



Cropland and Grassland Practices

Technical and Financial Assistance to plan and apply filter Strips, Grassed Waterways, Tree Planting, Planned Grazing Systems, Fencing, Grass Seeding, Pipelines, Tanks, Ponds/Dugouts, Rural Water Hook-up, and Pasture/Grassland Buffers.



To Request Assistance or for more information:

Contact Conservation Districts:

Brule-Buffalo (Chamberlain) 605-734-5413
Gregory County (Burke) 605-775-2770
Hamill (Winner) 605-842-0603
Clearfield/Keyapaha (Winner) 605-842-0603
Todd County (Mission) 605-856-4440
Aurora (Plankinton) 605-942-7719
Bon Homme County (Tyndall) 605-589-3232
Charles Mix (Lake Andes) 605-487-7577
Davison (Mitchell) 605-996-1564
Douglas County (Armour) 605-724-2846
Hutchinson (Menno) 605-387-5539
Yankton County (Yankton) 605-665-6704



This Watershed project is administered by the Randall RC&D (Resource Conservation and Development) Association, Incorporated.

Major implementation funding is provided through the Clean Water Act, Section 319 Grant.

Visit our website: <http://sdrcd.org/randall.aspx>