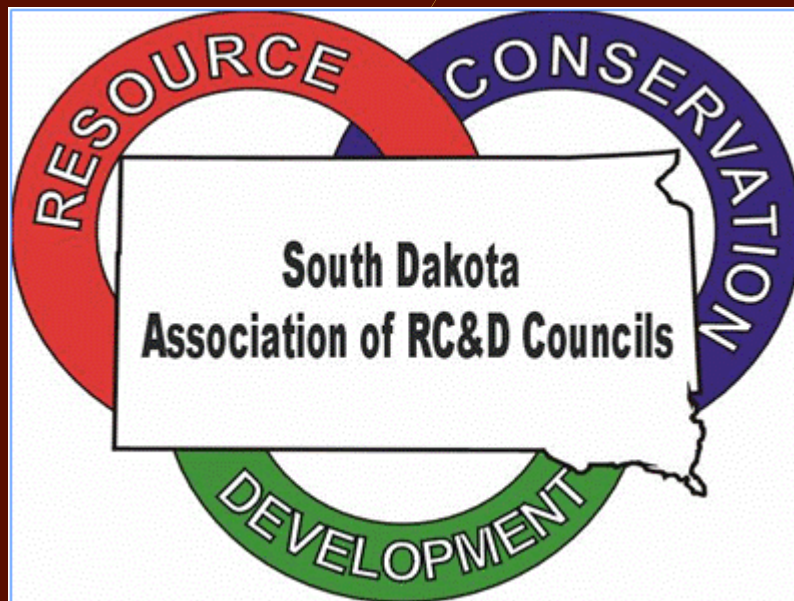


State Association of RC&D Councils



FY 2013
Annual Report

Table of Content

SD Association of RC&D Councils President	Page 3
South Dakota Association of RC&D Councils	Page 4
Councils Contact Information	Page 5
Badlands RC&D	Page 7
Black Hills RC&D	Page 8
Lower James RC&D	Page 10
North Central RC&D	Page 11
Randall RC&D	Page 12
South Central RC&D	Page 14
Tatanka RC&D	Page 16
Vermillion Watershed (Applicant Area)	Page 16

Letter from the President

Hello Everyone,

As another year ended, our state Resource Conservation and Development Councils are still working hard to keep their doors open. Four of our seven councils still have projects they provide assistance to. The other three councils still have a contact person available to talk to (see contact information on page 5).

If you have a project that needs a 501.c.3 non-profit organization to handle your grant funds, contact your local RC&D. Most of our RC&D's have a 501.c.3 designation. Need help with a local project? We may be able to assist you with that also. Over the past 50 plus years our councils have handled a multitude and wide variety of projects.

This year will be busy, as we begin the task of putting together and hosting the Western Region RC&D Conference for 2015. We have a number of seasoned people who will be helping plan this. This will be our third time as hosts of the conference.

I hope you have a productive year and blessings on all your endeavors.

Sincerely,

Ellen Reddick

State President



President



Ellen Reddick, Black Hills RC&D

Vice President



Sherri Hanson, Lower James RC&D

Treasurer



Susan Schultz, Randall RC&D

Secretary



Jewell Bork, South Central RC&D

South Dakota Association of RC&D Councils

MISSION STATEMENT

Serving the people of South Dakota by the transfer of information and by communicating the identity of Resource Conservation and Development Councils.

VISION STATEMENT

The vision of the South Dakota Association of RC&D Councils, Inc., is to be a self-governing organization that:

- Promotes RC&Ds;
- Shares information by networking;
- Increases community involvement; and
- Provides assistance to councils.

South Dakota Association of RC&D

Councils Contact Information

Badlands RC&D

Sharon Dennison
23162 293rd St
Tuthill, SD 57574
Phone: 605.685.6907
E-mail: sharond@gwtc.net

Black Hills RC&D

Dennie Mann
PO Box 9547
Rapid City, SD 57709
Phone: 605.348.2611
E-mail: blackhillsrcd@gmail.com or

Lower James RC&D

Sherri Hanson
203 W 7th St. Suite 200
Woonsocket, SD 57385
Phone: 605.796.4476 ext 3
E-mail: sherri.hanson@sd.nacdnet.net

North Central & Dakota Central RC&D

Sherri Cass or Joe Leichtnam
800 West Dakota
Pierre, SD 57501
Phone: 605.280.2442 (Sherri's cell)
605.390.2812 Joe's cell)
E-mail: cassequine@hotmail.com
recycler@gwtc.net

Randall RC&D

Les Labahn
PO Box 187
217 Chateau St.
Pickstown, SD 57367
Phone: 605.487.7035
E-mail: leslie@cme.coop

South Central RC&D

Jewell Bork
PO Box 461
107 West 2nd St
Murdo, SD 57559
Phone: 605.669.2222
E-mail: southcentralrcd@goldenwest.net

Tatanka RC&D

Arnold Schott
PO Box 19
McLaughlin, SD 57562
Phone: 605.823.4939 (H)
605.823.4942 (W)
E-mail: mclughsd@heartlandpower.org

Vermillion Watershed

Larry Gauger
501 N Douglas Street
Howard, SD 57349
Phone: 605.772.5618 (H)
605.480.1726 (C)
E-mail: lga@alliancecom.net

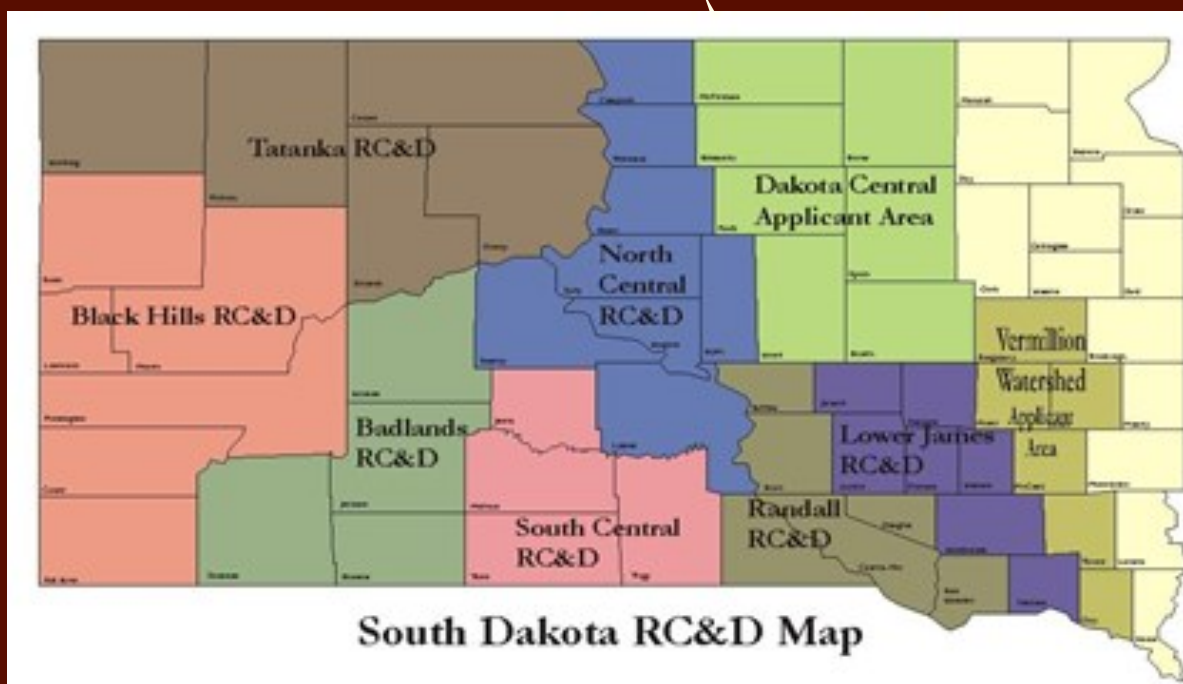
South Dakota Association of RC&D Councils

The Annual Report provides highlights of projects from each of the seven designated RC&D areas and the one RC&D applicant area, awaiting authorization from United States Department of Agriculture (USDA). For more detailed information on an RC&D area, please visit their individual Web sites at <http://www.sdrcd.org>.

South Dakota RC&D Councils worked with local sponsors during fiscal year (FY) 2013. The RC&D projects are approved for RC&D assistance by RC&D Councils when local organizations request help for important efforts that are identified as priority actions by both the local organizations and the RC&D Councils.

Community projects supported by the RC&D Councils have many economic development and natural resources benefits (job creation, wildlife habitat development, energy production, etc.). Information on individual projects are highlighted in the following report.

The SD RC&D Association continues to lead a state wide Agricultural Energy Committee to provide educational opportunities throughout the state. Throughout FY 2013 several grazing and grassland tours, farmer's market meetings, Conservation Days, grant workshops, and rangeland tours were organized by the RC&D councils.



Badlands RC&D

Raptor Day in Martin

On April 24th Badlands RC&D along with the Bennett County Conservation District sponsored the Black Hills Raptor Center for all the students of the Martin Grade school. We had ten individual sponsors to pay for this program.



Youth Works Stays Busy Helping the Community

Badlands also sponsored Youth Works again last summer. They came to Martin in June and spent the summer here painting, cleaning, and entertained at the nursing home. A community picnic at the city park in Martin was held every Thursday.

Black Hills RC&D

“All Lands”

2013 Mountain Pine Beetle Accomplishments

2013 was a year of successful mountain pine beetle collaboration and action among many stakeholders living and working in the Black Hills of Northeastern Wyoming and Western South Dakota.



In an effort largely unmatched throughout the country, private landowners, County Weed and Pest Departments, Resource Conservation Districts, and State Federal Agencies have joined together in a collaborative “all lands” approach to combat the current mountain pine beetle epidemic.

This collaboration has resulted in the Black Hills Regional Mountain Pine Beetle Strategy, a five year strategy for responding to the current epidemic in both Wyoming and South Dakota. With the ability to thin and treat only a portion of the forest in any one year, it is important that efforts are targeted through this strategy to be as effective as possible.

Using a variety of methods including forest thinning, sanitation harvest, cut and chunk, cut and burn, prescribed fire, and chemical spraying, the collaborators have treated hundreds of thousands of trees across thousands of acres of infested and at-risk area throughout the Black Hills ponderosa pine forest.

There is a tremendous spirit of cooperation behind the work that is being accomplished. The larger Black Hills community of Wyoming and South Dakota is working together to slow progression of the mountain pine beetle in the Hills.

Private Landowners across the region have treated infested trees on their own land. Many have hired commercial spray companies to spray trees of particular value to them as landowners.

The State of Wyoming, in cooperation with County Weed and Pest Districts and natural resource districts, is making crews available to private landowners to survey for infested trees, and has implemented both a full paid treatment program or one that compensates private landowners for treating infested trees. Approximately 53,000 trees were treated with the cut and chunk method, and 10,000 trees were treated and salvaged by local industry.

The State of South Dakota is providing technical assistance to private landowners in conjunction with a cost-share program for treating green-infested trees in select priority areas, and has held numerous informational workshops. Custer State Park treated 34,000 trees, used timber sales to thin forests at risk, and preventive sprayed high value trees.

County Weed & Pest Boards (Custer, Crook, Fall River, Lawrence, Meade, Pennington, Weston) throughout the Black Hills are working with their respective states and municipalities to provide financial assistance and field crews. County Weed & Pest crews are working with the forest products industry and US Forest Service to identify infested trees within active timber sales. The trees are then removed by on-site timber harvesting crews. Counties have instituted ordinances against the mountain pine beetle and have entered into agreements with the Forest Service to allow counties to treat beetles on Forest lands.

The Forest Products Industry is a key partner in slowing the epidemic. Unique to much of the West, the Black Hills area has a prominent forest products industry that provides cost-effective treatments and contributes greatly to the local economies. There are 35-40 contractors working timber sales in the Black Hills. Nearly 27,00 acres were thinned by the industry across all land jurisdictions and ownerships in 2013.

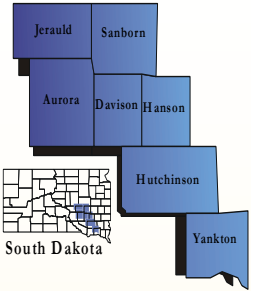
The Bureau of Land Management and the National Park Service treated 700 trees with cut and chunk, logged 500 acres, and preventive sprayed 545 trees on public lands and at Mount Rushmore National Memorial. The Natural Resource Conservation Service supported tree thinning and infested tree marking on 886 acres of private lands.

The Black Hills National Forest continues to provide timber sales that focus on removing infested trees and thinning high risk trees to reduce susceptibility to future infestation. The Forest is preventive spraying legacy trees, old trees of high value, and trees in picnic areas and campgrounds that provide shade and beauty in these important recreation areas. The Forest approved the *Mountain Pine Beetle Response Project* that permits treatment on 122,000 acres through timber sales and about 248,000 acres of non-commercial treatments.



Lower James RC&D

Lower James
RC&D



John Deppe's Lower James RC&D Memorial Fund

Since 1992, the Lower James RC&D Council has provided \$30,000 through over 30 mini-grants to local projects. The Lower James RC&D Council Endowment Fund was established in November of 2006 to continue these mini-grants through interest earned from the **"John Deppe's Lower James RC&D Memorial Fund"** established with the SD Community Foundation.

Southeast Enterprise Facilitation Project

Provides one-on-one, confidential, business assistance to entrepreneurs in Turner and Hutchinson Counties (since 1997) to create, retain, or expand an average of 15 businesses and 30 jobs per year. Average cost is \$2000 per job created or retained, with 78% of businesses assisted still in business. The project has been primarily supported by investments from communities, counties, utilities, private businesses and organizations.



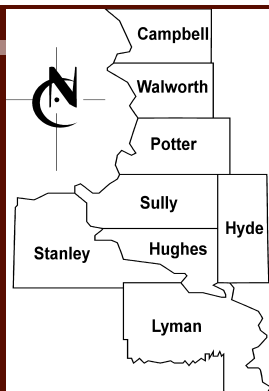
Water Quality Project

The Lower James RC&D Council continues to partner with the SD Ag Nutrient Management Team on the Manure Sample project. A \$9,750.00 grant had been approved in 2010 from the SD Discovery Center located in Pierre, SD. This grant money has been used to provide assistance to multiple livestock producers in eastern South Dakota, with 238 manure samples having been processed so far. This project provides assistance for economic and environmental application of manure on 3400 acres of land.



Bella's Butterfly Garden Project

The Lower James RC&D Council has awarded \$500.00 to Bella's butterfly garden project at Northridge Park in Mitchell, South Dakota. A brick has been placed in this garden with the RC&D Councils name on it.



Goals/Objectives:

- Land Conservation
- Water Management
- Community Development
- Land Management

Board of Directors

President: Nick Nemec

Vice President: Rod Lemler

Secretary/Treasurer: Jim Protexter

Bruce Williams

Darrell Benz

Joe Leichtnam

Dennis Arbach

Aldine Mitt

Jack Lemburg

Viola Goetz

Boyd Gourneau

RC&D Staff

Program Assistant: Sherri Cass

North Central RC&D

Annual Report 2013

800 West Dakota Avenue, Pierre, South Dakota 57501

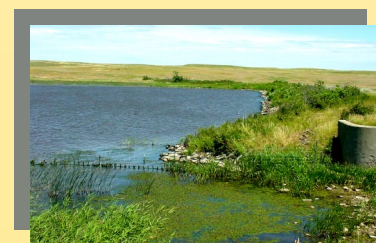
Email: ncrcd@mncomm.com

- In 2013, North Central RC&D lead several projects which exceeded our goals and objectives. These projects leveraged more than **\$2 million** to the region in key issues like land conservation, water management, community development and land management.
- Since 1975, the North Central RC & D has successfully balanced rural community development with environmental protection for the people in Campbell, Walworth, Potter, Sully, Stanley, Hughes, Hyde, and Lyman counties and throughout the state of South Dakota.
- The mission of the North Central RC&D Association is to implement a rural development plan in central South Dakota to help address the priority environmental, social, and economic problems.

Accomplishments & Highlights for Fiscal Year

2009 USFWS COOP

- Statewide partnership between the USFWS and NCRC&D to facilitate the accomplishment of habitat conservation work on private and tribal lands for mutual benefits.
- Primary habitat conservation practices include: wetland creations, wetland enhancements, wetland restorations, native grass seedings, rotational grazing systems, alternative watering systems for livestock, prescribed grassland burns, and riparian restorations.
- Secondary purpose to work with SD Grassland Coalition and other partners to promote native grassland conservation through a variety of educational, extension, and outreach programs.
- Implemented 78 conservation practices representing 10,490 grassland and wetland acres.
- This project was successfully completed and closed in 2013, (approximately one year earlier than originally planned).
- All goals and objectives were exceeded.



Heifers For South Dakota

- Established by Ty and Rosalie Linger, Miles City, MT ranchers, as a result of the losses to South Dakota ranchers during the Winter Storm “Atlas”, October, 2013.
- Accepting pledges of quality breeding cattle to be donated to ranchers to help them recover from their losses.
- Monetary donations also welcomed to help with transportation costs and to purchase additional cattle.
- NCRCD providing 501(c)(3) non-profit status, managing monetary donations, and administering receipts for tax purposes to all donors.
- NCRCD donated administrative fees and pass through fees for the project.
- NCRCD has helped facilitate the donation and delivery of 714 head of cattle to 68 families and individuals.
- An additional 176 head of cattle still in the feedlot, mostly quality replacement heifers that will be dispersed after synchronization and AI-ing.
- Roughly \$265,000 in monetary donations have been received.
- Value of cattle already delivered is in excess of \$1.25 million.
- Numerous hours of labor, brand inspection fees, transportation fees, feed expense, vaccine and other animal health care products have also been donated. Too many to list.
- For more information on HFSD, please visit their website www.helpforsouthdakota.com or their Facebook page Heifers For South Dakota.





RANDALL RC&D Assoc., Inc.

276 Main Street, P.O. Box 247

Lake Andes, SD 57356-0247

<http://www.sdrctd.org/randall.aspx>

2013 Annual Report

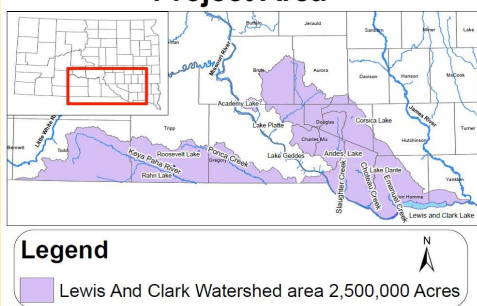
The Randall RC&D Council continues to be active and dedicated to improving the natural resources and making the area a better place to live, work and play.

Lewis & Clark Watershed Implementation Project (LCWIP)

Eleven Conservation Districts (Aurora, Bon Homme, Brule-Buffalo, Charles Mix, Clearfield-Keyapaha, Davison, Douglas, Gregory, Hutchinson, Todd and Yankton) make up the LCWIP partnership along with SD Association of Conservation Districts, SD-DENR, SD Non-Point Source Task Force, SD Board of Water & Natural Resources, EPA, SD Conservation Commission, South Central Water Dev. District, USDA-NRCS, South Central RC&D and Lower James RC&D. In Fiscal Year 2013, the LCWIP Partnership leveraged \$867,536.73 in Local Match with \$465,277.00 federal Section



Lewis and Clark Implementation Project Area



319 funds, plus \$247,886.00 South Dakota Consolidated Water Facility Construction and Clean Water State Revolving Fund-Water Quality funds. Additional federal USDA Conservation Program funds assisted producers. LCWIP progressed very well in addressing Ag Waste and Nutrient Management Systems, Riparian Area and Stream Protection conservation measures.

Lake Andes Restoration Project

Charles Mix Co. Lake Restoration Organization completed draft wetlands mitigation plan to be used as a basis to obtain federal and state permits. Goal is to create a 17-acre lake for fishing and environmental education. Randall RC&D obtained funding for water quality monitoring.



SD Birding Festival at Ft Randall



Photo by Chad Coppess, SD Tourism

Volunteers from Wagner, Lake Andes and Pickstown communities partnered for the 3rd Annual Festival the first weekend in May 2013. Seventy-one “birders” enjoyed excellent presentations and outdoor activities. Enthusiasts (of all ages) from throughout South Dakota, and 2 from Minnesota, counted and identified 139 bird species. The 2014 festival will be held May 2nd through the 4th and plans to be bigger and better.

Wagner Farmers Market

The area farmers market in Wagner kicked off its second season on June 7, 2013. The market ran from 4 to 7 PM every Friday at their new location on the corner of Highway 46 and Main Street. Fresh fruits and vegetables were on display from several vendors.



Fairfax Lake Restoration

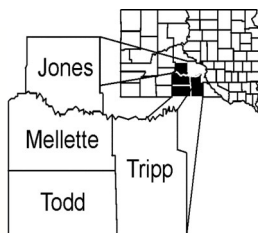
Built in 1934, Lake Fairfax needs major repairs on the spillway. This will extend the useful life of this beautiful lake at least another 80 years. Randall RC&D is assisting local volunteers to organize restoration efforts.

Outreach/Information & Education

This grant, through the South Central Water Development District (SCWDD), provided funding for projects and activities related to water quality within the Lewis & Clark Watershed. Rainfall/Wind Erosion Demonstration Kits were purchased through a portion of the grant.

Leadership Development

Les Labahn and Jeff Stewart attended the 36th Annual Western RC&D Association Conference in Gering, Nebraska. In addition, Randall RC&D Council members participated in South Dakota Association of RC&D Councils meetings in October and April.



South Central RC&D

South Central Resource Conservation and Development
 PO Box 461 Murdo, SD 57559 Phone 605.669..2222
 Email: southcentralrcd@goldenwest.net

2013 Ranchers Workshop

The 34th Annual Ranchers Workshop was held on Tuesday, January 15, 2013 at the Community Events Center in White River, SD. The main speaker for the day was Jolene Brown, CSP Professional Speaker, and Champion for Agriculture. Brown lives on a farm in east central Iowa and has been speaking professionally for agriculture for over 20 years. Brown addressed the human side of agriculture during her presentation entitled "The Top Ten Stupid Things Families Do to Break up Their Business". Brown gave the attendees the tools they need to improve their productivity, profitability and family relationships. She discussed in-laws, off-site family and estates, transition of the family business and the importance of communication and meetings. In the afternoon Brown moderated a panel of experts including an accountant, a lawyer and a financial Advisor, answering questions about the financial, and legal avenues to consider when passing the farm onto the next generation. Dr. Travis Van Anne, Professional Service Veterinarian from Boehringer-Ingelheim Vetmedica (BIV), Inc spoke on Drought Issues and Pasture Health.

The Ranchers Workshop is coordinated by Mellette and Todd County Conservation Districts, Natural Resource Conservation Service (NRSC), Mellette/Todd County Farm Service Agency (FSA), South Central Resources Conservation and Development Council (South Central RC&D) and the Rosebud Extension .



Annie's

SDSU Extension instructed two Annie's Projects, one in White River and another in Winner. Annie's is a six-week course where women will learn how to develop financial records, develop key communication skills, have the opportunity to ask questions about retirement and estate planning, expand marketing knowledge, all while having fun in a supportive learning environment. Annie's Project was designed to empower women by providing detailed ranch management information and build networks between women.

The White River Annie's group extended their education further by hosting a Pasture Walk in June. The group invited the public to Brett and Gina Strain's ranch for the walk. Under the guidance of Lealand Schoon, Mellette County NRCS and Roger Gates, SDSU Extension Range Management Specialist, the participants learned how to identify common forbs, and grasses. Schoon shared the rainfall simulator and how cover, litter, and bare ground affect infiltration and runoff.

Main Street Project

The Mission Chamber of Commerce partnered with South Central RC&D to assist the community to develop a park in an open Main Street lot purchased by the city seven years ago. Several organizational meetings were held and grant funding was applied for to cover the cost of the trees and grass seed.



Two Boy Scouts, working on their Eagle Scout Badges, measured the lot, put up a wrought iron fence, planted the grass and will be assisting with the installation of an irrigation system. The Hidden Timber 4-H club assisted the Scouts with planting nine trees in the park. The Todd County Conservation District donated time, and equipment to till the ground before planting and Cherry-Todd Electric donated wood chips for mulch. Future plans include installing a flag pole and building a stage for local music concerts.

Murdo Area Market

The Murdo Area Market was newly organized this year and South Central helped write and obtained grant funding to get the market off the ground. Experts from South Dakota Extension Service were Skyped into meetings and helped the group write by-laws and provided guidelines to laws on proper food labeling and licenses needed by the vendors. An additional grant was received from the Buy Fresh Buy Local program to purchase promotional items. The market met every Tuesday from June 11th to September 27th. Seven vendors were the heart of the market. Attendance varied from 30-120 people. Items at the market included baked goods, fresh produce, Watkins, hand crafted items and western bling items.



Farm & Ranch Management

Mitchell Technical Institute (MTI) partnered with Badlands/South Central Enterprise Facilitation (BSCEF) and South Central RC&D to offer the Level 1 and Level 2 Farm & Ranch Management Program to producers in the BSCEF area.

The Level 1 program is a 5 week program that instruct producers on critical farm record keeping and meets the Borrowers Training that Farm Service Agency (FSA) requires of their producers acquiring loans. The Level 2 training takes a year to complete. The instructor will work one on one with the producers helping them set up their farm records with the Easy Farm record keeping software. With the use of this software producers will be keeping detailed records making it easier to determine break even points to aid in making better management decisions, develop needed tax reports, and develop an increased knowledge of the strength and weaknesses of their farm and ranch business.

Tatanka and **Vermillion Watershed RC&D** Councils are still organized but did not have any projects to report for Fiscal Year 2013.

The U.S. Department of Agriculture (USDA) prohibits discrimination in all its programs and activities on the basis of race, color, national origin, age, disability, and where applicable, sex, marital status, familial status, parental status, religion, sexual orientation, genetic information, political beliefs, reprisal, or because all or a part of an individual's income is derived from any public assistance program. (Not all prohibited bases apply to all programs.) Persons with disabilities who require alternative means for communication of program information (Braille, large print, audiotape, etc.) should contact USDA's TARGET Center at (202) 720-2600 (voice and TDD). To file a complaint of discrimination write to USDA, Director, Office of Civil Rights, 1400 Independence Avenue, S.W., Washington, D.C. 20250-9410 or call (800) 795-3272 (voice) or (202) 720-6382 (TDD). USDA is an equal opportunity provider and employer.